

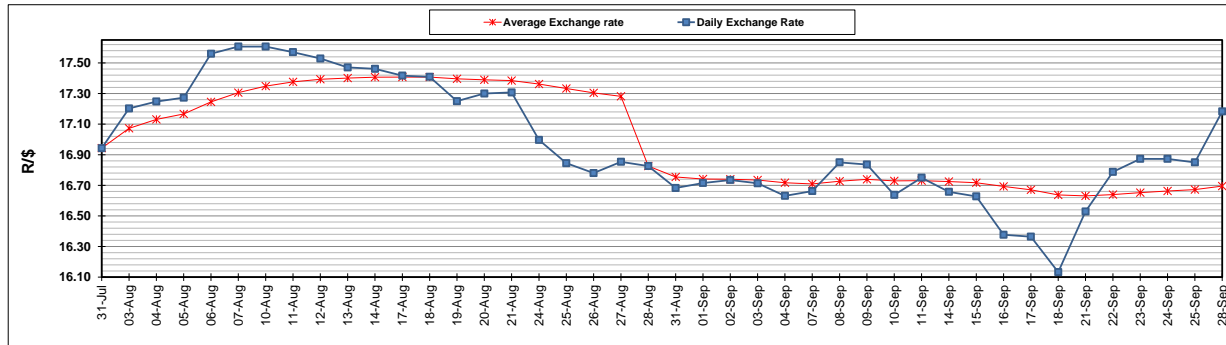
	PETROL 95 ULP	PETROL 93 ULP & LRP	DIESEL 0.05%	DIESEL 0.005%	ILL. PAR.
GAUTENG PUMP PRICE (SA c/l) AS FROM 02/09/2020	1,518.000	1,489.000	-	-	-
WHOLESALE PRICE (SA c/l) AS FROM 02/09/2020	-	-	1,327.560	1,331.960	716.828
SINGLE NATIONAL MAXIMUM RETAIL PRICE	-	-	-	-	899.000
BASIC FUEL PRICE - 28/09/2020 (SA c/l)	563.896	552.328	499.940	502.035	464.258
PRESS RELEASE CONTRIBUTION TO BFP 02/09/2020 - 28/09/2020 (SA c/l)	565.470	546.470	576.630	581.030	512.128
UNIT OVER/(UNDER) RECOVERY - 28/09/2020 (SA c/l)	1.574	(5.858)	76.690	78.995	47.870
AVERAGE BASIC FUEL PRICE 28/08/2020 - 28/09/2020	533.265	522.799	489.189	491.236	437.730
AVERAGE UNIT OVER/(UNDER) RECOVERY 28/08/2020 - 28/09/2020	32.791	24.257	90.305	92.658	77.943

ANALYSIS MOVEMENT OF AVERAGE OVER/(UNDER) RECOVERY

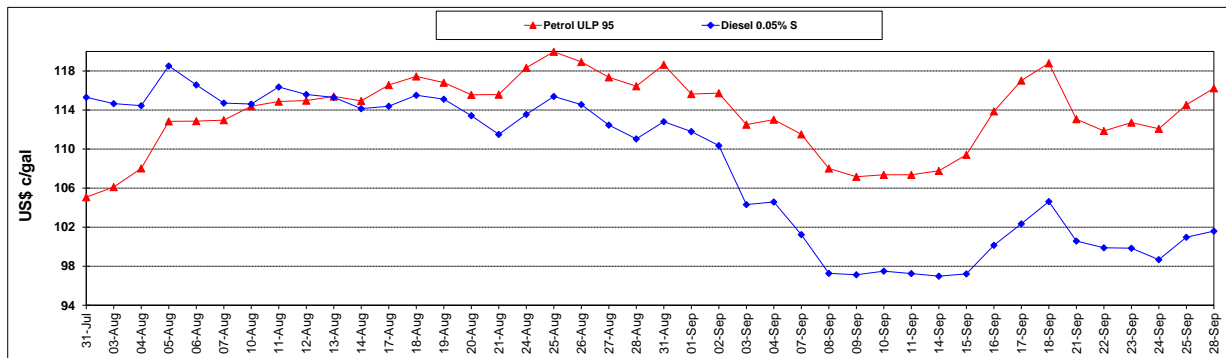
	PETROL 95	PETROL 93	DIESEL 0.05%	DIESEL 0.005%	ILL. PAR.
- MOVEMENT IN INTERNATIONAL PRODUCT PRICES	14.067	5.901	73.129	75.410	62.573
- MOVEMENT IN EXCHANGE RATE	18.724	18.356	17.176	17.248	15.370
AVERAGE UNIT OVER/(UNDER) RECOVERY 28/08/2020 - 28/09/2020	32.791	24.257	90.305	92.658	77.943

R/\$ EXCHANGE RATE - (R/\$17.1830 - 28/09/2020)

EXCHANGE RATE USED IN BASIC FUEL PRICE



INTERNATIONAL PRODUCT PRICES OF BASKET USED IN BASIC FUEL PRICE



BASIC FUEL PRICE IN SA CENTS PER LITRE

